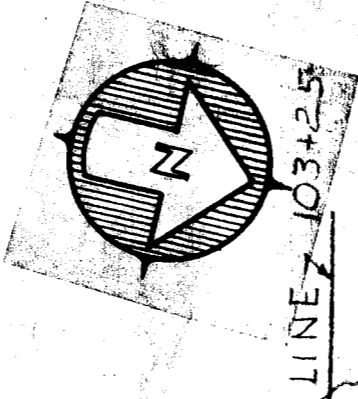


88



B.M. NAIL IN BASE OF 10" LOCUST TREE 25' LT. 103+10. ELEV. = 947.66

BEGIN 24" DUCTILE IRON PIPE M.H. 103+25'

M.H. 107+36'

AZ 347-29

(24" D.I.)

(24" V.C.)

(24" D.I.)

AZ 305-31

MATCH LINE 103+25

SAUNDERS

DUKE TOWER (T-7) (24'x24') 44+10

34'

34'

96'

DUKE

N 12°-3'

NO. DATE BY REVISION

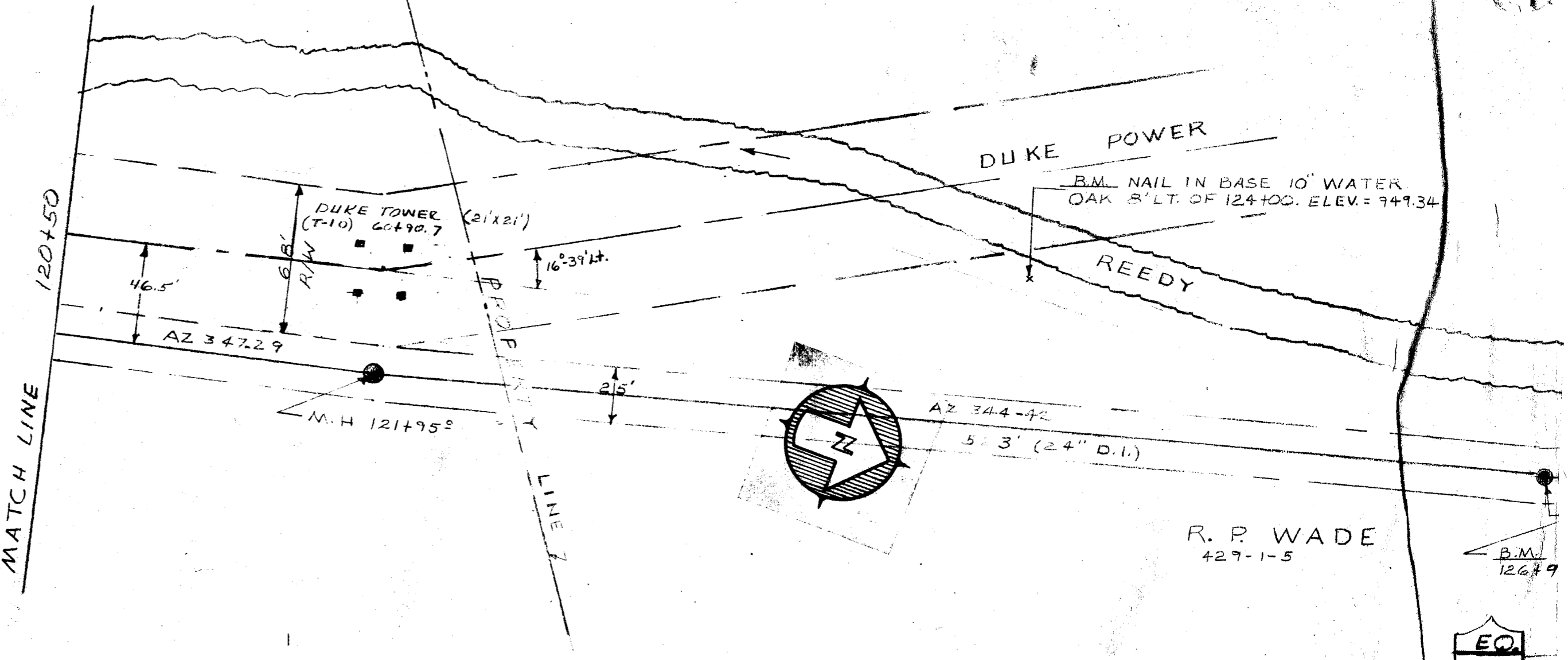
GREATER GREENVILLE SEWER DIST. COMMISSION
GREENVILLE, SOUTH CAROLINA
TRUNK SEWER LINE
SECTION THREE - BEREA SUB DISTRICT
PLAN & PROFILE - SHEET NO. 5



THE MCPHERSON COMPANY
ENGINEERS AND ARCHITECTS
GREENVILLE, S. C.

DRAWN BY: K.T.G.
CHECKED BY: W.K.D.
FILE NO. A-71

SCALE: HORIZ. 1" = 40'
VERT. 1" = 10'
DATE: 10-29-65
DRAWING NO. C-6526-3-5

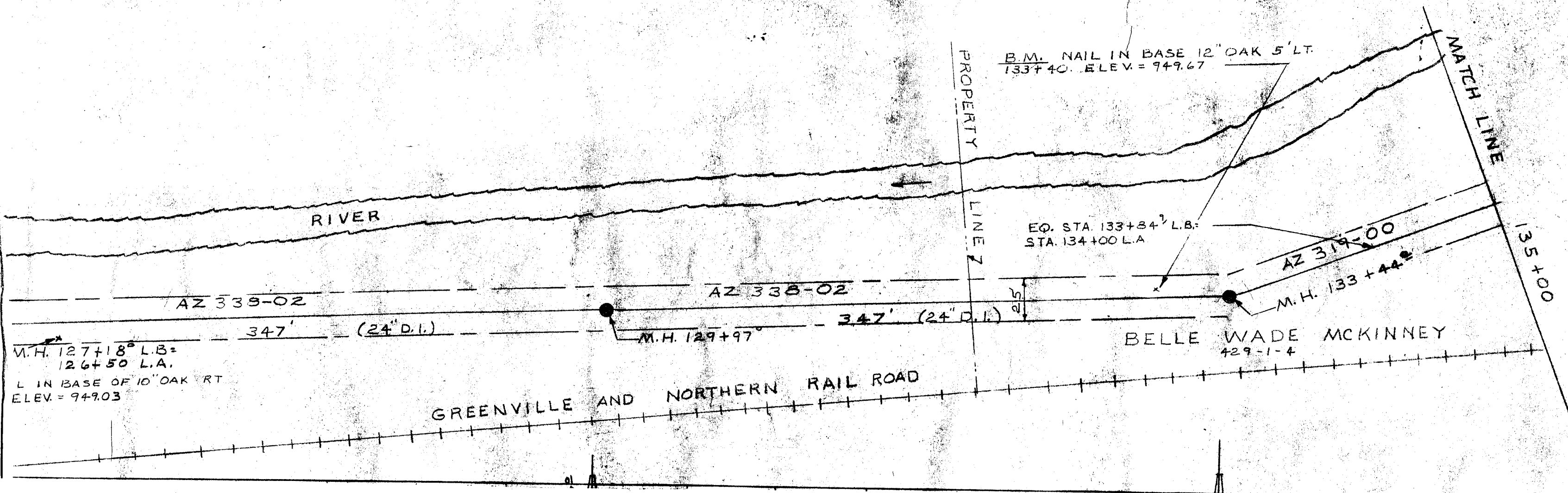
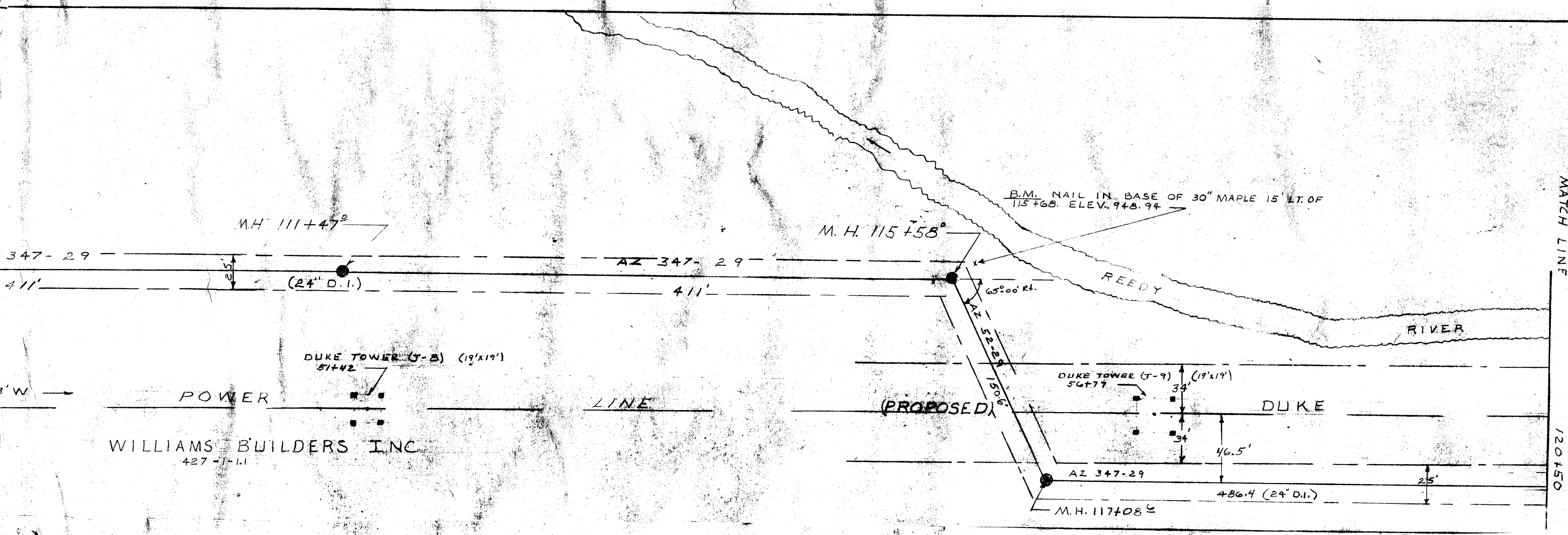


R. P. WADE
429-1-5

B.M. 126+9

EQ

#22 #50 Filed This 3 day of Nov. 1965
And Recorded in Vol. 999 Page 881 & 89 M
R.P. Wade
Register Measre Conveyance Greenville County, S. C.



*22450

THE MCPHERSON CO.
 ENGINEERS & ARCHITECTS
 GREENVILLE, S. C.
 JAN. 4. 1966